

Design and creation ■

Development and construction ■

Complete project management including tooling ■

MOULDED PLASTIC PARTS ■

Production using modern CNC injection moulding machines ■

Further processing of moulded parts ■

MOULDED PLASTIC PARTS



Manufacturer of moulded plastic parts for more than 40 years

OWI began processing plastics when purchasing a first large injection moulding machine (3000 t) in 1963. Just a few years after gaining first experience in this sector, OWI started production of models which were later to be sold in millions, such as the beer garden set "Universal" and the classic "Europa" moulded seats, still much in demand.

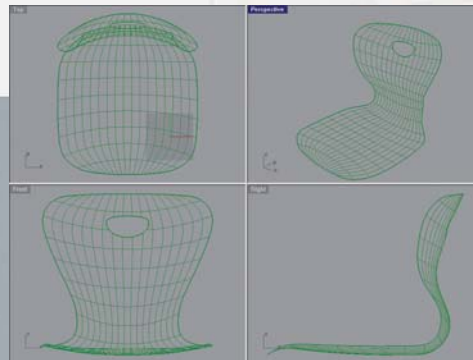
In over 40 years of continuous development many more own models were added, more recently there was a concentration mainly on customer models for use throughout the seating industry.

OWI currently has around 450 active injection moulds.

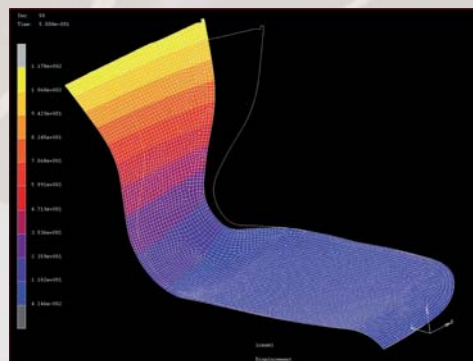
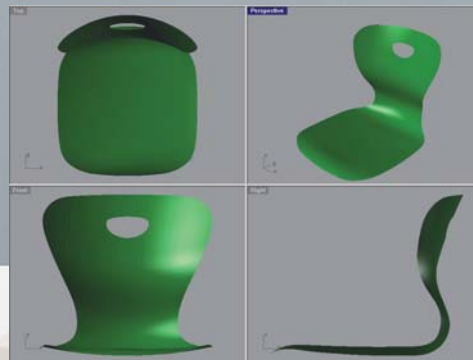


From the concept





Grid structures, design contours, flow diagram



Development, construction, project management and mould making

Our project managers are not only experts in injection moulding technology, they are equally familiar with the language of designers and developers. We offer the platform you need for well-timed and technologically sound project management for new moulded parts and element groups, accompanying you throughout the development process with our know-how. You benefit from our cooperation with specialist mold

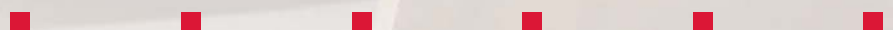
manufacturers, prototype companies and drawing offices.

Our speciality is the production of large moulded parts of superior optical and mechanical quality, such as seating and seat backs, mesh back frames and arm rests.

Thanks to high precision machinery and consistency in production, we are able to meet the special requirements for

structural components and the strong integration of connecting parts.

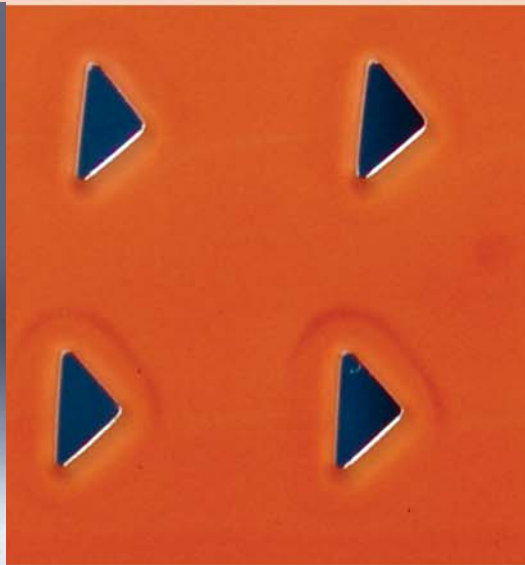
Our customers are predominantly manufacturers of office furniture and furniture for public buildings, car seats, children's car seats, grandstand and stadium seating, or operate in the building suppliers' sector.



MOULDED PLASTIC PARTS

Supply of materials

Fitting of tools



Production and quality management (DIN EN-ISO9001:2000)

Production takes place using modern automatic injection moulding machines. State-of-the-art peripheral equipment for materials preparation, the injection moulding process and the handling of moulded parts ensures efficient and yet flexible production.

Because colouring and special stabilising processes are carried out on site, special versions also in quite small quantities can be produced efficiently.

We process all common thermo-plastic plastics, from rubber-like soft TPU to extremely hard fibre-glass reinforced polyamides.

In special finishings for outdoor conditions, flame protection, anti-static properties, we can draw on decades of experience. Our skilled employees are well-versed in both the tooling and injection moulding technology, and in the sophisticated requirements of our customers.



OWI



*A seat is removed
Arm rest parts are ejected
and quality is checked*



to the final product

MOULDED PLASTIC PARTS

References:



OWI



CANARY WHARF STATION



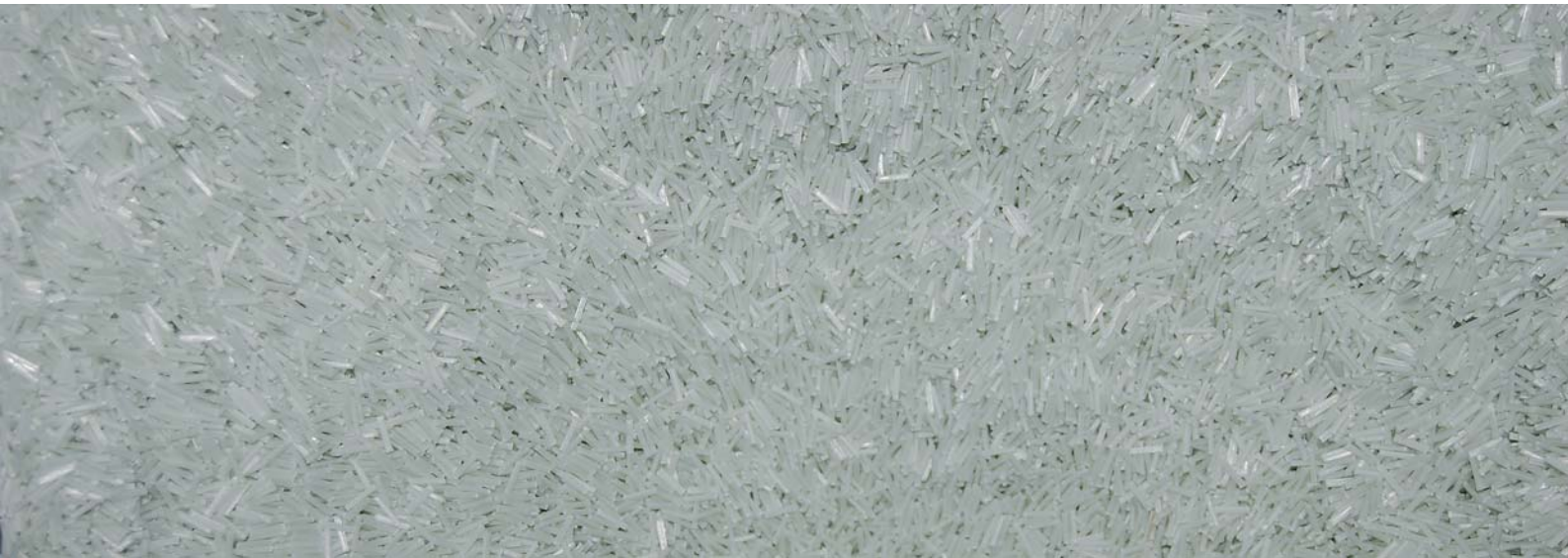


Moulded wooden and plastic parts

OWI GmbH

Postfach 1564
97805 Lohr am Main
Germany
Rodenbacher Straße 44-46
97816 Lohr am Main
Germany

Phone: ++49 (0) 93 52 5 09-0
Fax: ++49 (0) 93 52 5 09-100
contact@owi-lohr.de
www.owi-lohr.de



Technical data

- Modern, CNC-controlled injection moulding machines
 - Clamping forces of 1600–13000 KN
 - Injection weights approx. 30 grams to 6 kilograms
 - Maximum mold dimensions:
Width/Height of backing plate 2220/1880mm
Distance between bars 1600mm
Distance between plates 2850 mm
- Monosandwich-2K process
- Continuous quality assurance system
- Further processing such as drilling, punching, turning, ultrasound welding of moulded parts
- Assembly and varnishing